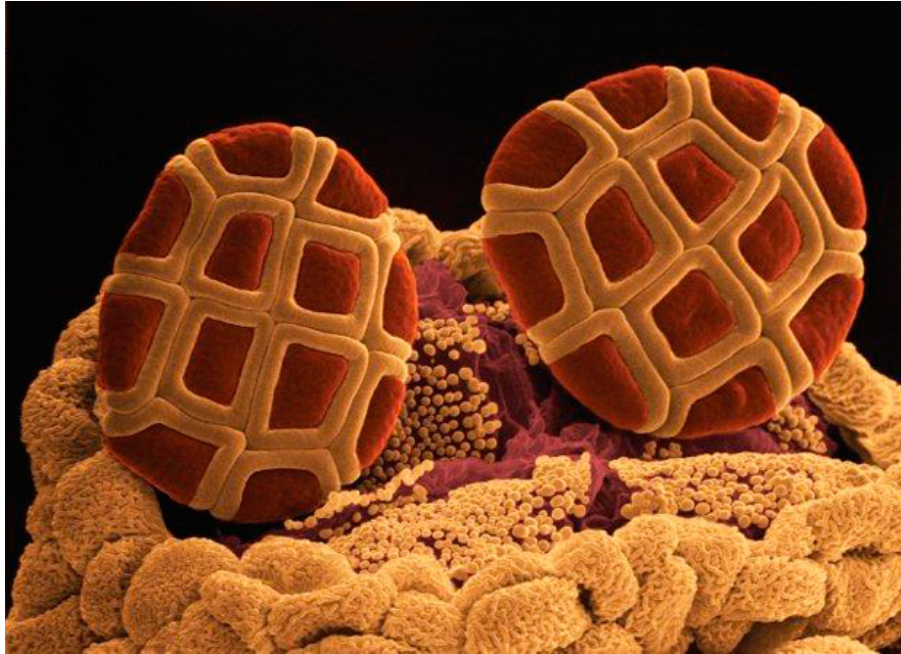


# ORDER OF OPERATIONS SELF-CHECK PUZZLE



What is this? Complete the questions below to find out. (Hint: It's microscopic.)

A  $(2 + 3) \times 10 \div 2$   
 P  $2 + 3 \times 10 \div 2$   
 T  $14 - 12 \div 2$   
 O  $(14 - 12) \div 2$   
 N  $3 \times 4 - 2 + 3$   
 T  $3 \times 4 - (2 + 3)$

L  $15 \div 3 \times (5 - 4)$   
 E  $15 \div 3 \times 5 - 4$   
 L  $16 \div 4 \times 8 - 3$   
 E  $16 \div 4 \times (8 - 3)$   
 L  $30 - 12 \div 3$   
 W  $(30 - 12) \div 3$

6

25

8

7

5

21

17

1

29

26

20

13

**ANSWER**  
WATTLE POLLEN